

Full  
Body  
tiles



# EXPRESS

## Series

Catalogue 2024

600x  
600MM

600x  
1200MM





# EXPRESS Series

Catalogue 2024



## Introduction Express series

A Testament to durability and style. Engineered to withstand the rigors of high-traffic environments, these tiles offer a blend of robust construction and aesthetic appeal. From bustling corridors to tranquil home settings, the Express Series delivers unmatched performance and versatility. With its FULLBODY'S enduring color, it's the perfect choice for spaces where longevity and elegance are paramount. Elevate your projects with the reliability and charm of the Express Series.

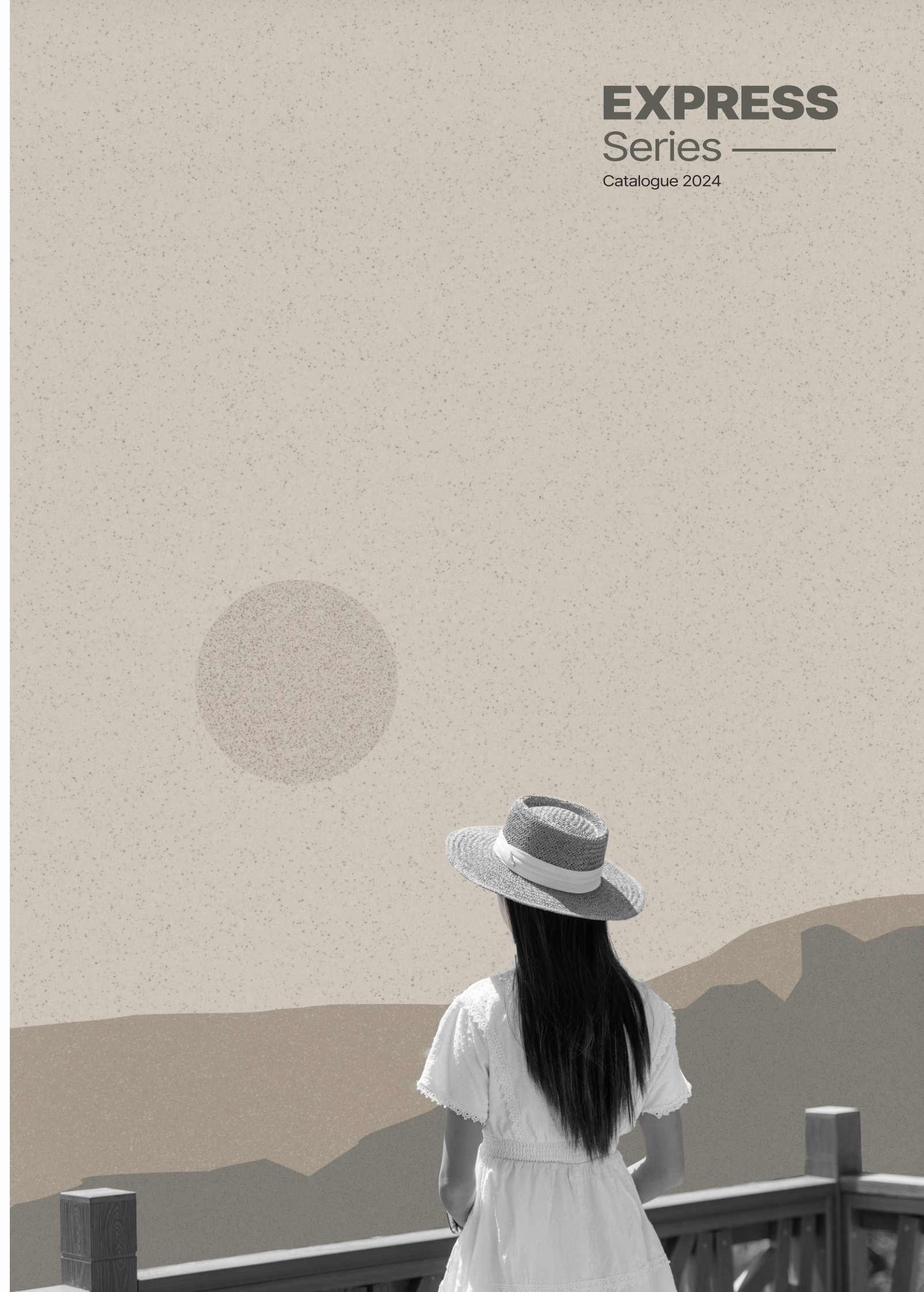


## Inspire from The Nature

---

Armano is one of the leading manufactures of ceramic tiles in India. We manufacture a great collection of fullbody tiles that come in various styles and sizes. The surfaces from Armano have a charismatic charm that enhances the aesthetic appeal of a space. These surfaces come in colours that are soothing to the eyes and gives a rich look! Armano keeps growing with the latest trends of interior design and architectural styles. We bring together the combination of creativity and comfort by designing tiles by using the latest technology.

600x  
600MM | 600x  
1200MM



600x  
600MM



## Usage Areas

Crafted with a full-body design, the color permeates throughout the tile, ensuring uniformity and longevity even under the most demanding conditions. This feature makes the Express Series the optimal choice for high-frequency areas, where durability is paramount. These tiles are perfect for places like Parking lots, Hallways, Schools, Airports, Malls, Hotels and Big Commercial sites. Plus, They're just as great for Homes, especially outdoor spots like decks that take a beating from daily use.



INTERIOR



BATHROOM



RESIDENTIAL



COMMERCIAL



HOSPITALS



URBAN  
CENTERS

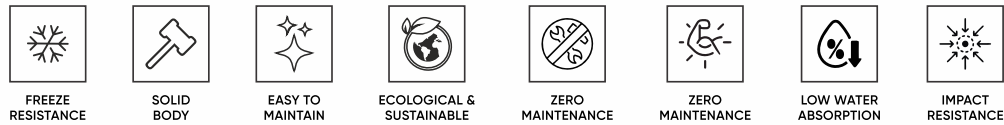


GYM



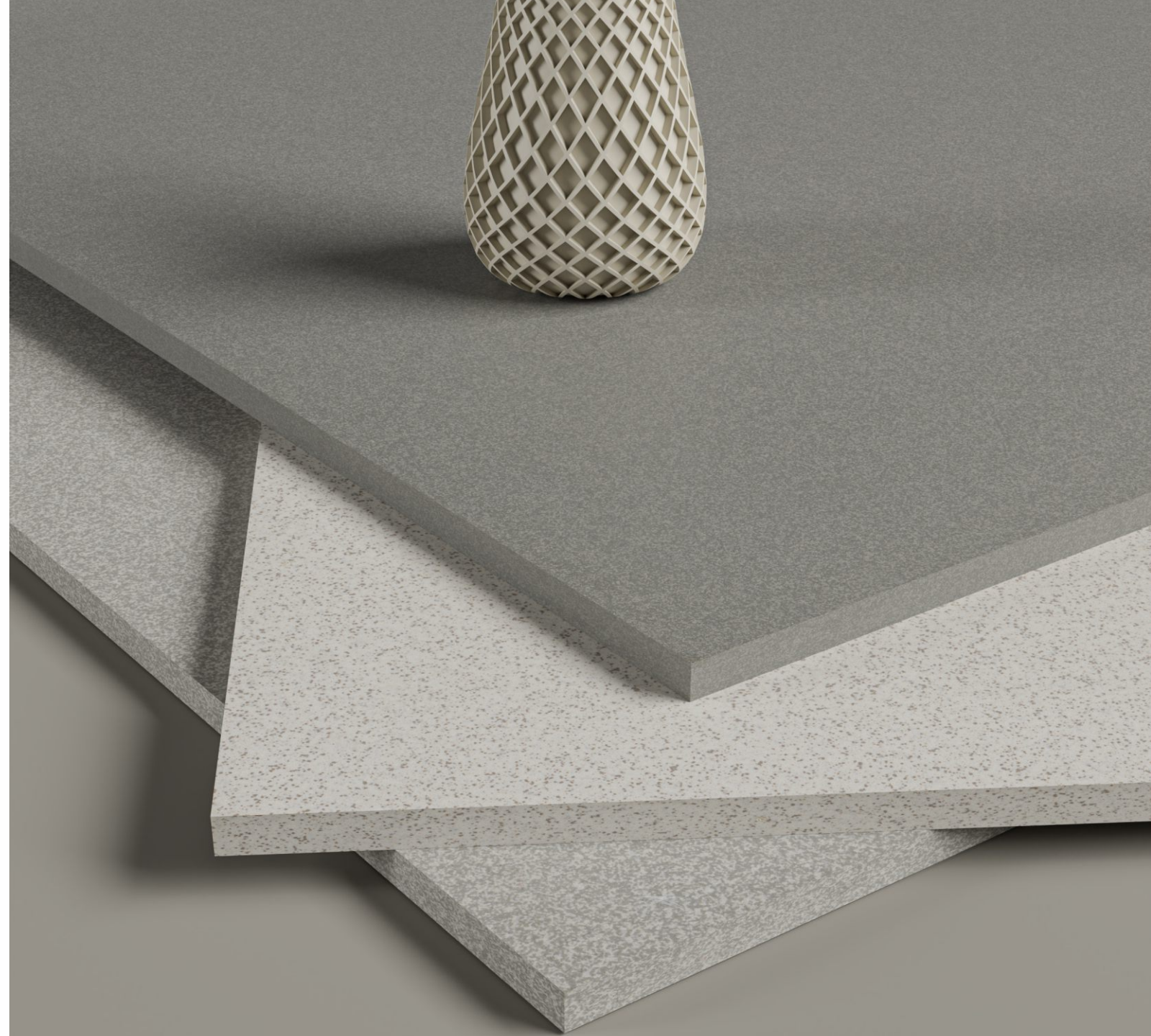
## Specifications Of Products

Full-body tiles, sized at 600x600mm and 8mm thick, epitomize durability and versatility. Composed of porcelain or ceramic, their uniform composition ensures resilience throughout. With a low water absorption rate, they excel in wet areas like bathrooms and kitchens. Surface finishes vary from polished to matte, catering to diverse aesthetic preferences. Their resistance to stains, scratches, and fading makes maintenance hassle-free. Ideal for floor and wall applications, these tiles adorn residential and light commercial spaces alike. Available in an array of colors and designs, they offer endless possibilities for creative expression. Full-bodied and functional, they elevate interiors with enduring elegance and practicality



8MM  
Thickness

Full  
Body  
tiles



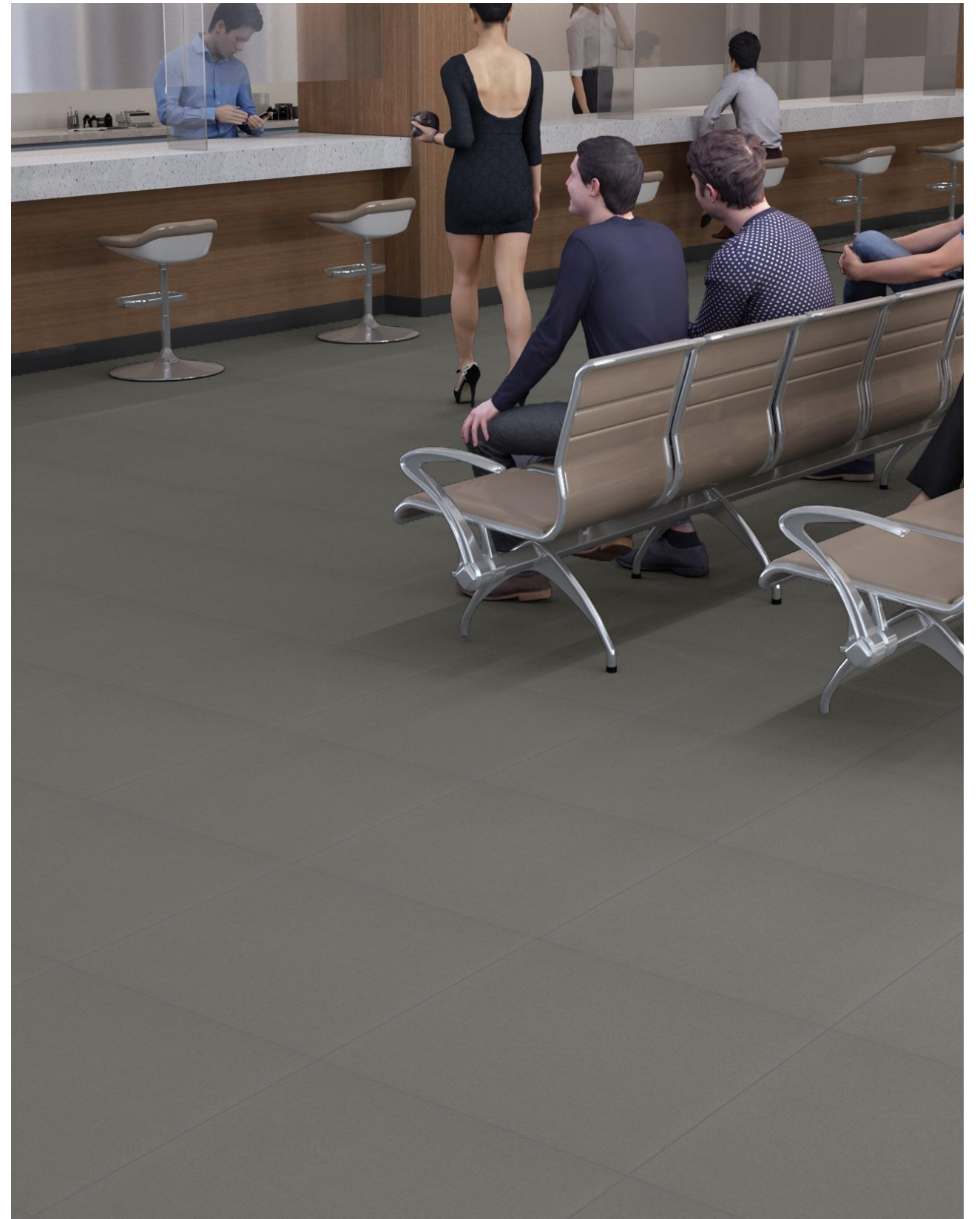
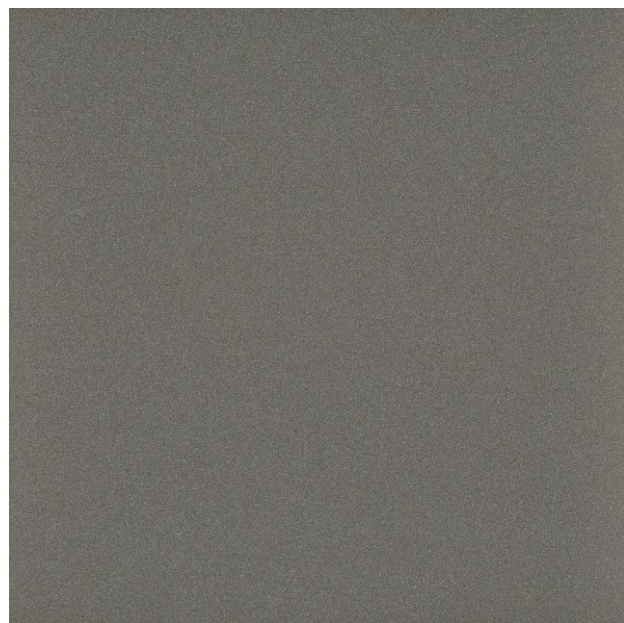
Design Name:

**Express  
Carbon**

600x  
1200MM



600x  
600MM





Express  
Carbon

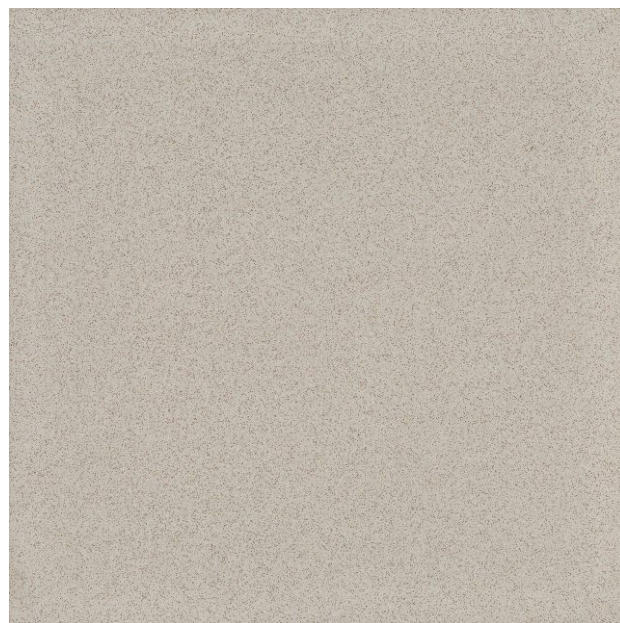
Design Name:

**Express  
Choco**

600x  
1200MM



600x  
600MM





Express  
Choco

Design Name:

**Express  
Dessert**

600x  
1200MM



600x  
600MM



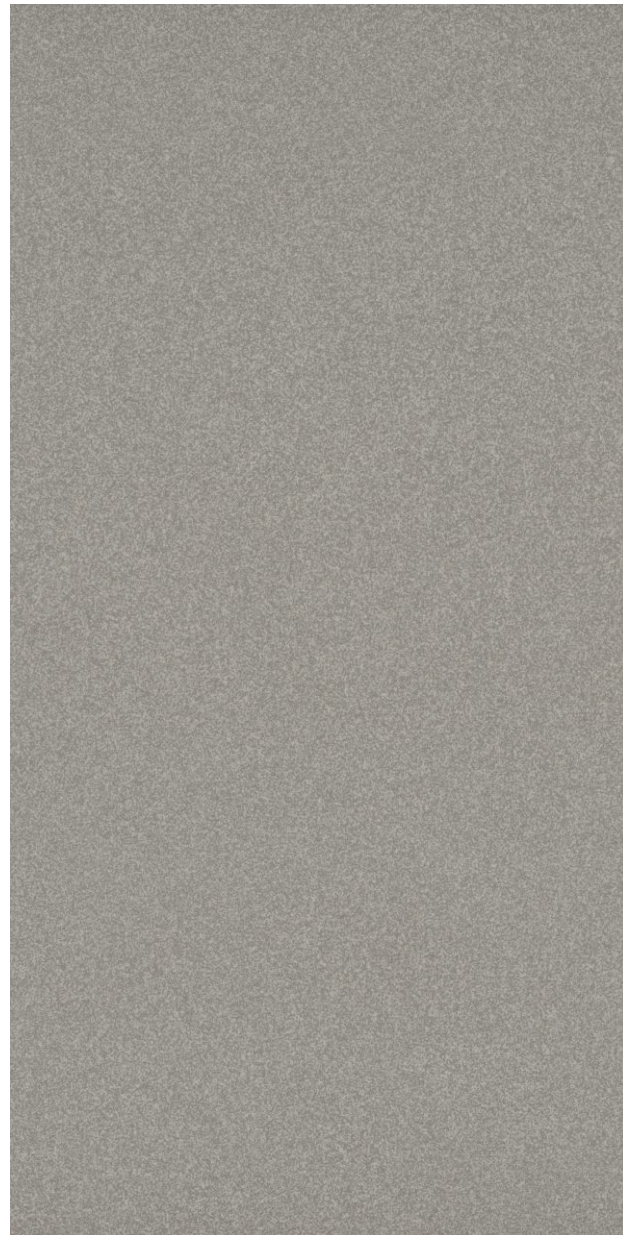


Express  
Dessert

Design Name:

**Express  
Earth**

600x  
1200MM



600x  
600MM



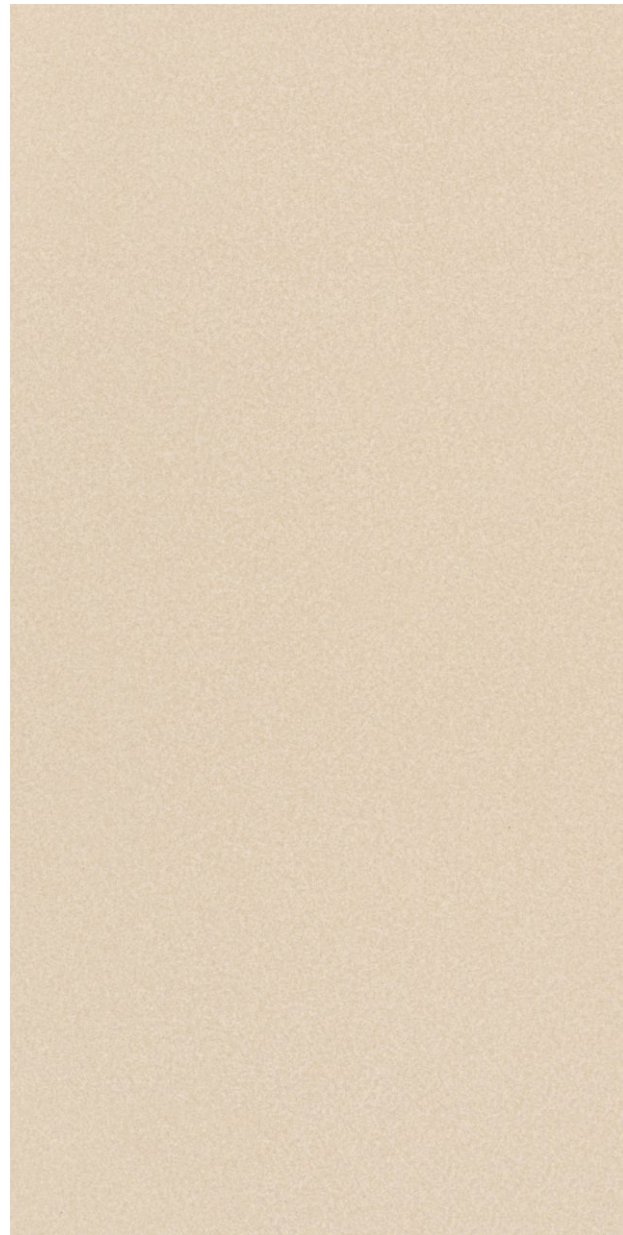


Express  
Earth

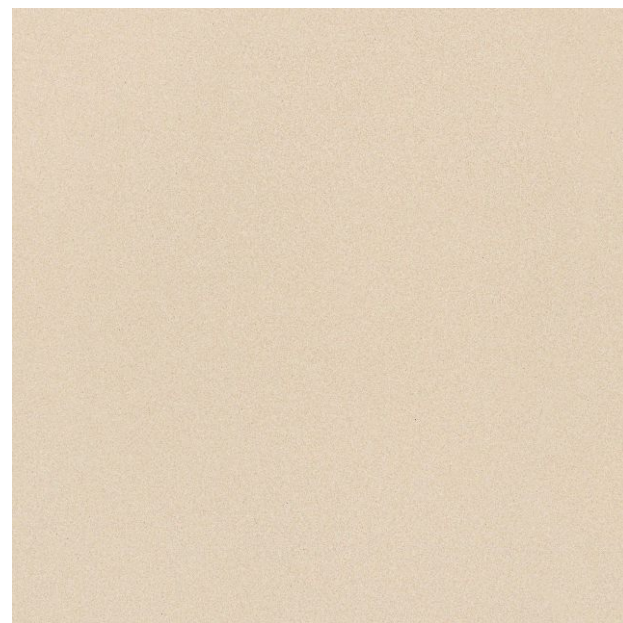
Design Name:

**Express  
Glory**

600x  
1200MM



600x  
600MM





Express  
Glory

Design Name:

**Express  
Lava**

600x  
1200MM



600x  
600MM



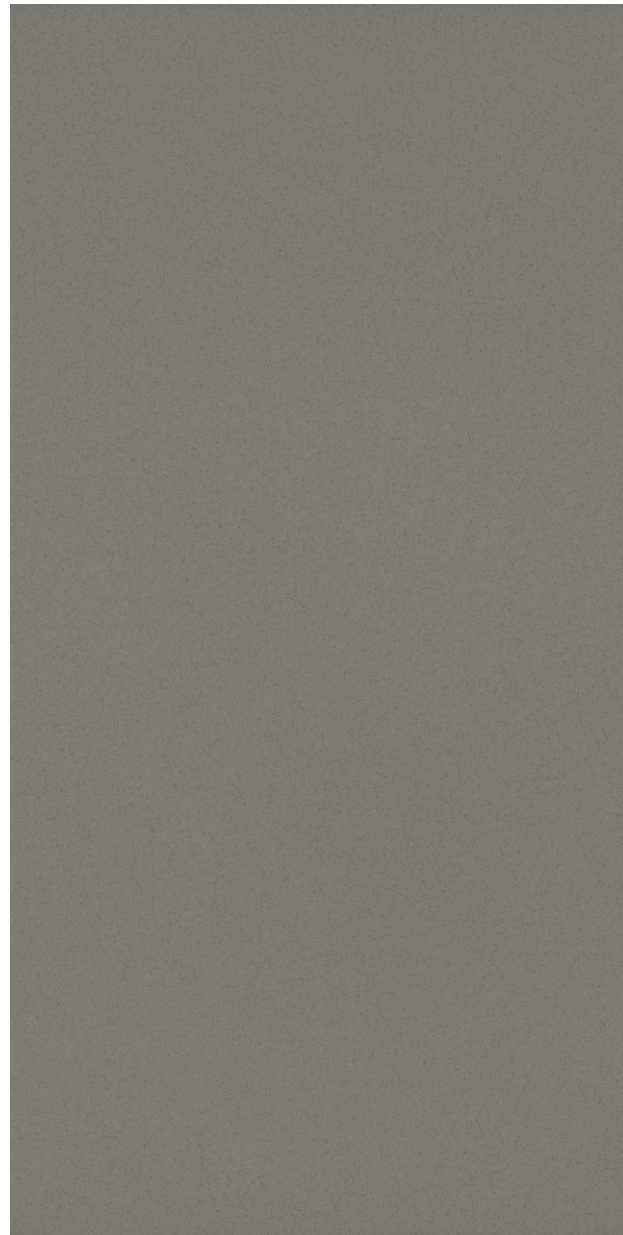


Express  
Lava

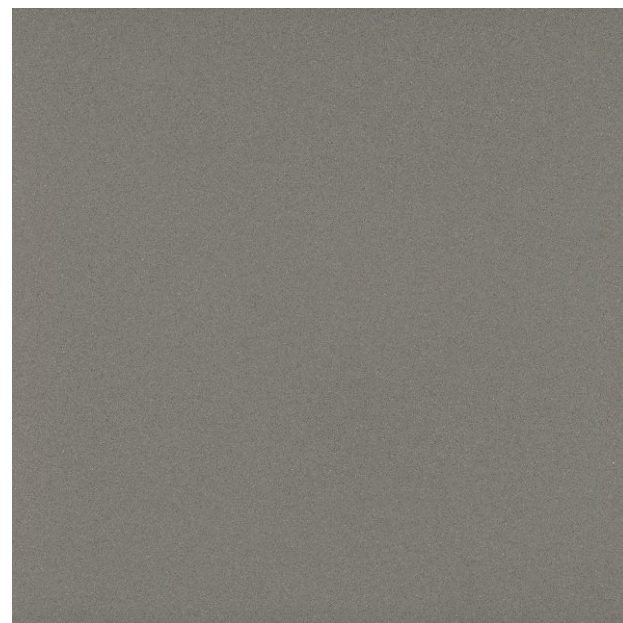
Design Name:

**Express  
Olive**

600x  
1200MM



600x  
600MM





Express  
Olive

Design Name:

**Express  
Soil**

600x  
1200MM



600x  
600MM





Express  
Soil

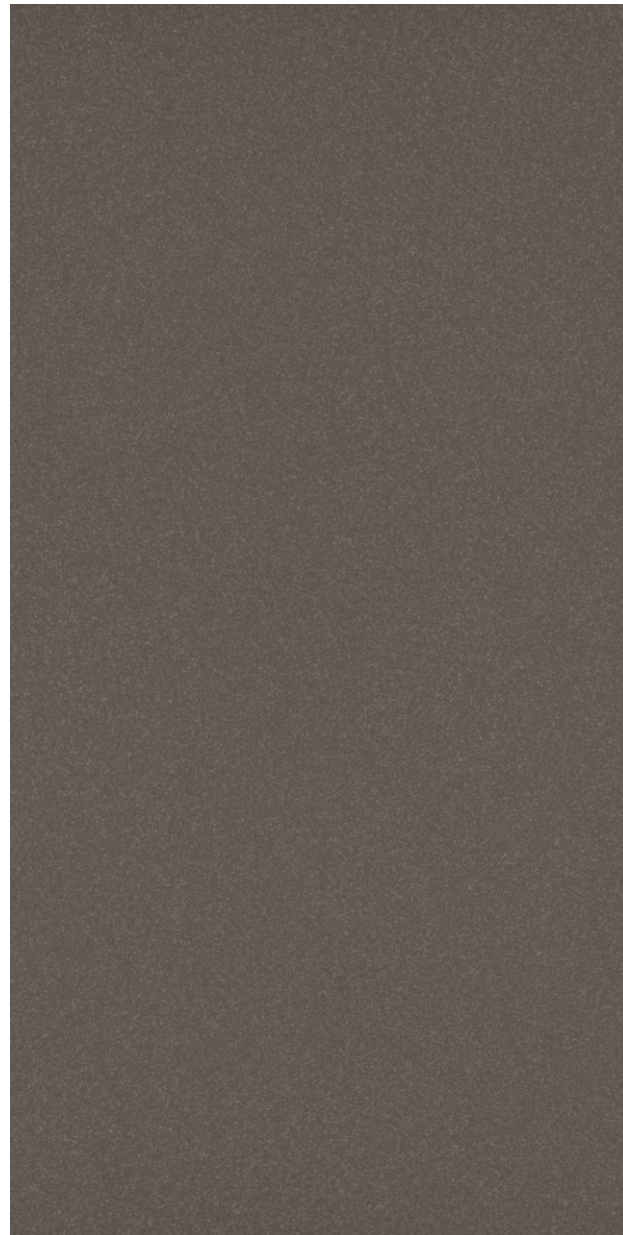
**Super Express**  
S E R I E S



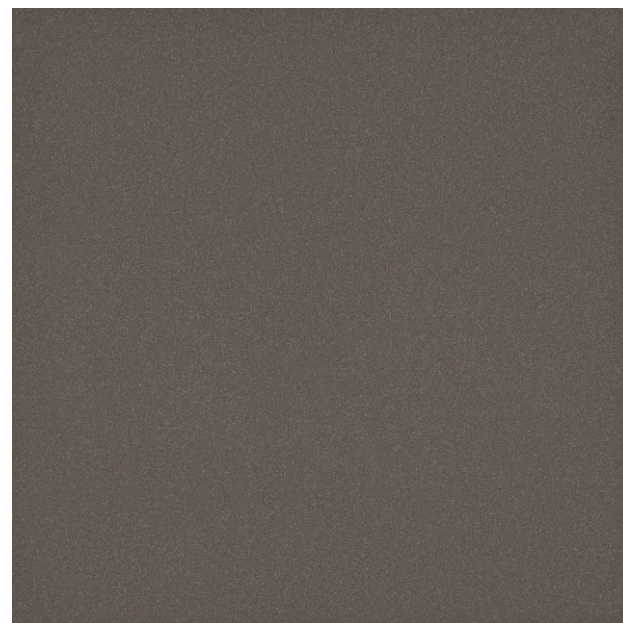
Design Name:

**Super Express  
Mepal**

600x  
1200MM



600x  
600MM





Super Express  
Mepal

Design Name:

**Super Express  
Pearl**

600x  
1200MM



600x  
600MM





Super Express  
Pearl

# Technical Specification

| TECHNICAL DETAILS                      | STANDARD AS PER ISO-13006/EN176 GROUP Bla | MEAN VALUE OF FULL BODY VITRIFIED TILES | METHOD OF TEST |
|--|---|---|----------------|
| Deviation In Length & Width            | ±0.60%                                    | ±0.10%                                  | ISO-10545-2    |
| Deviation In Thickness                 | +5.00%                                    | +2.00%                                  | ISO-10545-2    |
| Straightness Of Sides                  | ±0.50%                                    | ±0.10%                                  | ISO-10545-2    |
| Surface Flatness                       | ±0.50%                                    | ±0.10%                                  | ISO-10545-2    |
| Water Absorption                       | ≤ 0.50%                                   | E ≤ 0.03%                               | ISO-10545-3    |
| Breaking Strength                      | 1300 N                                    | 2000 N                                  | ISO-10545-4    |
| Abrasion Resistance                    | Max. 175mm                                | Max. 145mm <sup>3</sup>                 | ISO-10545-6    |
| Moh's Hardness                         | Min. 6                                    | ≤ 6*                                    | En101          |
| Frost Resistance                       | Frost Proof                               | Frost Proof                             | ISO-10545-12   |
| Thermal Shock                          | No Damage                                 | No Damage                               | ISO-10545-9    |
| Moisture Expansion                     | Nil                                       | Nil                                     | ISO-10545-10   |
| Thermal Expansion                      | <9 x 10 <sup>-6</sup>                     | <5 x 10 <sup>-6</sup>                   | ISO-10545-8    |
| Resistance of House Hold Chemical      | No Damage                                 | No Damage*                              | ISO-10545-13   |
| Stain Resistance                       | Resistance                                | Resistance*                             | ISO-10545-14   |
| Slip Resistance(friction Co Efficient) | > 0.40                                    | > 0.40                                  | ISO-10545-17   |

| SIZE       | PCS./BOX | WEIGHT / BOX (Approx) |        | COVERAGE AREA / BOX   |
|------------|----------|-----------------------|--------|-----------------------|
|            |          | POLISHED              | MATT   |                       |
| 600x1200mm | 2 Pcs.   | 29 Kg.                | 31 Kg. | 1.44 mtr <sup>2</sup> |
| 600x600mm  | 4 Pcs.   | 25 Kg.                | 25 Kg. | 1.44 mtr <sup>2</sup> |